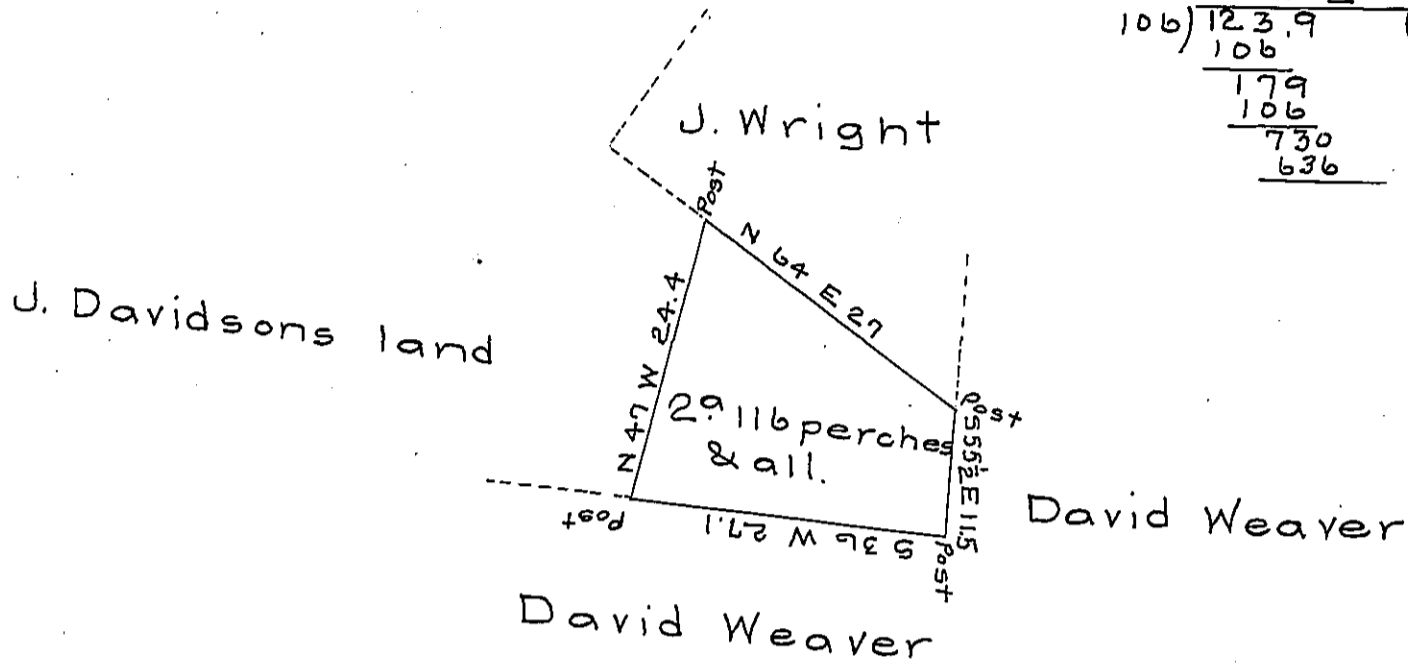


Bear.	Dist.	N. L.	S. L.	E. D.	W. D.	E. D. D.	W. D. D.	Mult.	N. A.	S. Areas
S36 W	27.1		21.94		15.92		6.44	0000 E		
N47 W	24.4	16.62			17.84		33.76	33.76 W	= =	561.0912
N64 E	27.	11.83		24.28		6.44		27.32 W	= =	323.1956
S55½ E	11.5		6.51	9.48		33.76		6.44 E	= =	41.9244

$\frac{1}{2}$ 926.2112
) 463.1056 (2 acres 116
 339 2 Perches &
 106) 123.9 (116
 106
 179
 106
 730
 636



Draught of two acres and one hundred and sixteen perches with six per cent allowance situated in Walker township Juniata county being part of a larger tract surveyed the sixteenth day of August A.D. 1762 in pursuance of a warrant granted to John Maginty bearing date July 29th 1762. The above part was resurveyed July 1st 1853 for Margaret Goshen for the purpose of obtaining a patent per Joseph Middagh under the directions of Conrad Mackle C.S.

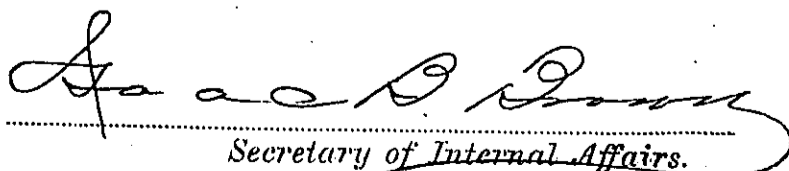
G. W. Jacobs C.S.

To J. P. Brawley Esq. }
 Surveyor Genl Pa. }

Note, The above is improved

G. W. J. C.S.

IN TESTIMONY that the above is a copy of the original remaining on file in the Department of Internal Affairs of Pennsylvania, made conformably to an Act of Assembly approved the 16th day of February, 1833, I have hereunto set my Hand and caused the Seal of said Department to be affixed at Harrisburg, this second day of May 1906.


 Secretary of Internal Affairs.